

Cherbourg shawl



You will need:

3.5 mm circular knitting needle.
650-700 meters of lace yarn.

Cherbourg shawl

SET UP ROWS:

Cast on 5 stitches and knit.

Next row: k1, kfb (knit front and back of stitch), k1, kfb, k1.

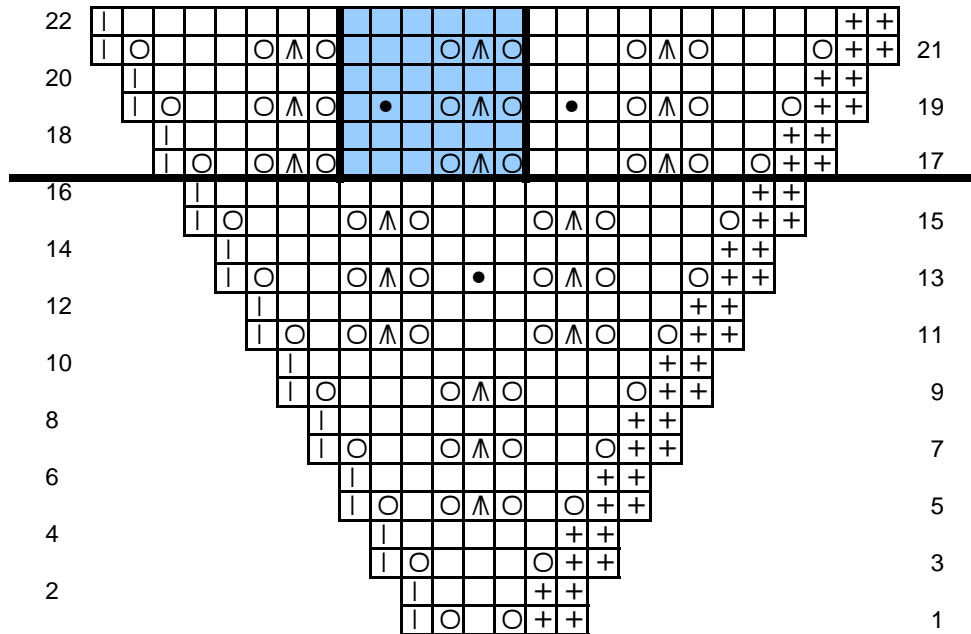
Begin CHART A.

Repeat rows 17 to 22 of Chart A 21 more. (Or many times as you want to, but end with the Row 22 sequence.)

Only the left part of the shawl is represented, the right part must be knitted in mirror.

This nice stitch has been created by Judy Marples for her Calais Shawl.

CHART A



- Legend:**
- 6-stich repeat
 - center stitch: knit RS and purl WS
 - + knit: (garter stich)
 - knit RS and purl WS
 - yo: yarn over
 - purl
 - △ s2,k1,p2sso: slip first and second stich together as if to knit, knit 1 stich, pass 2 slipped stiches over the knit stich.

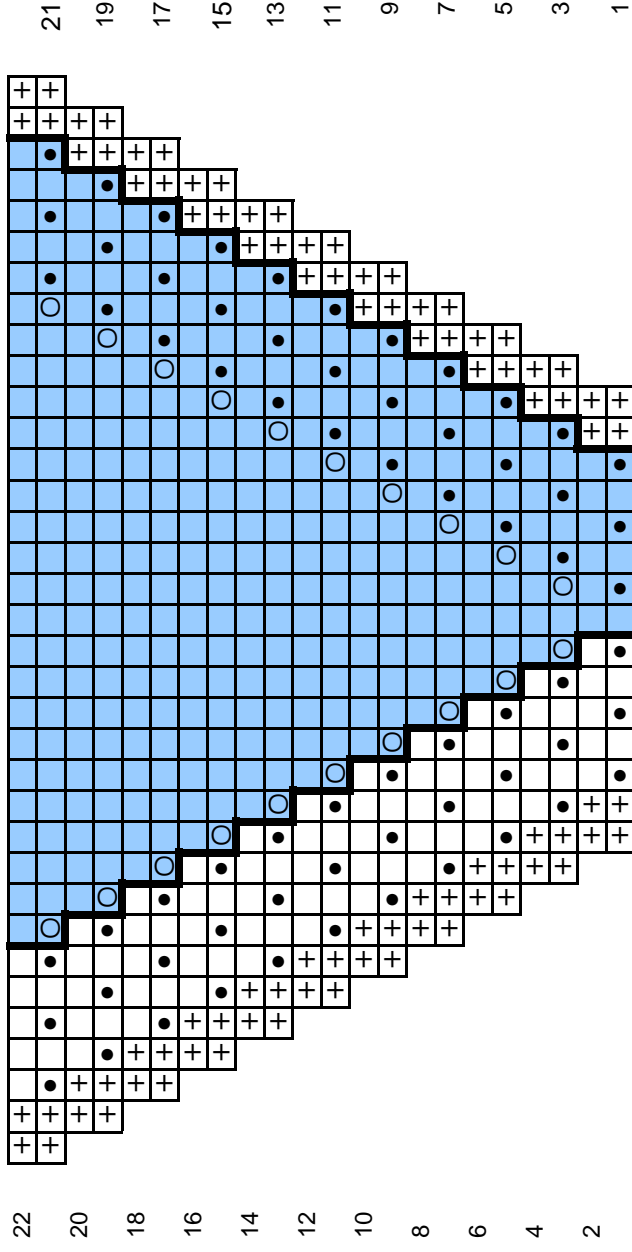
Begin CHART B. Like the shawl itself, ruffle can be as deep as you want it to be.

End with a stretchy bind-off.

Weave in ends and wash.

Cherbourg Shawl doesn't really need to be blocked, because of the ruffle.

CHART B



- Legend:**
- stitch repeat
 - + knit (garter stitch)
 - knit RS and purl WS
 - yo: yarn over
 - purl