



CALCUL MENTAL

# DUEL ET MÉMOIRE

8






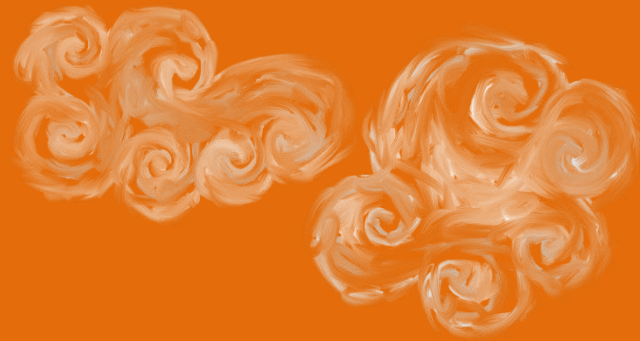
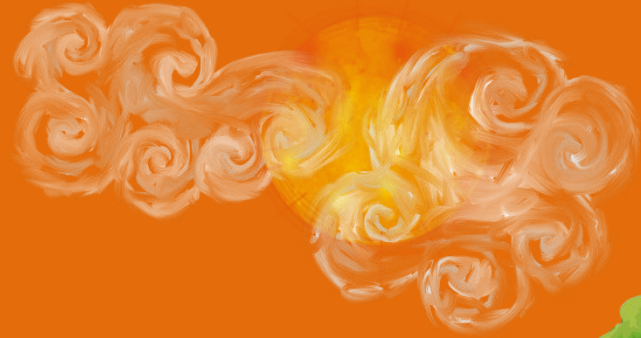
MÉMORISE LES NOMBRES  
SUIVANTS :





The background is a solid orange color. In the top left, there are stylized, swirling clouds in shades of orange and yellow. In the top right, there are more stylized, swirling clouds in shades of orange. On the left side, there is a large, gnarled tree with green foliage. In the bottom left, a cartoon man with black hair, a monocle, and a green and black outfit holds two curved swords. In the bottom right, a cartoon woman with a blue headpiece, a mustache, and a yellow and white outfit holds a staff with a golden ring. A large white speech bubble with a black border is positioned in the center, containing the text '13 - 8 - 21 - 44'.

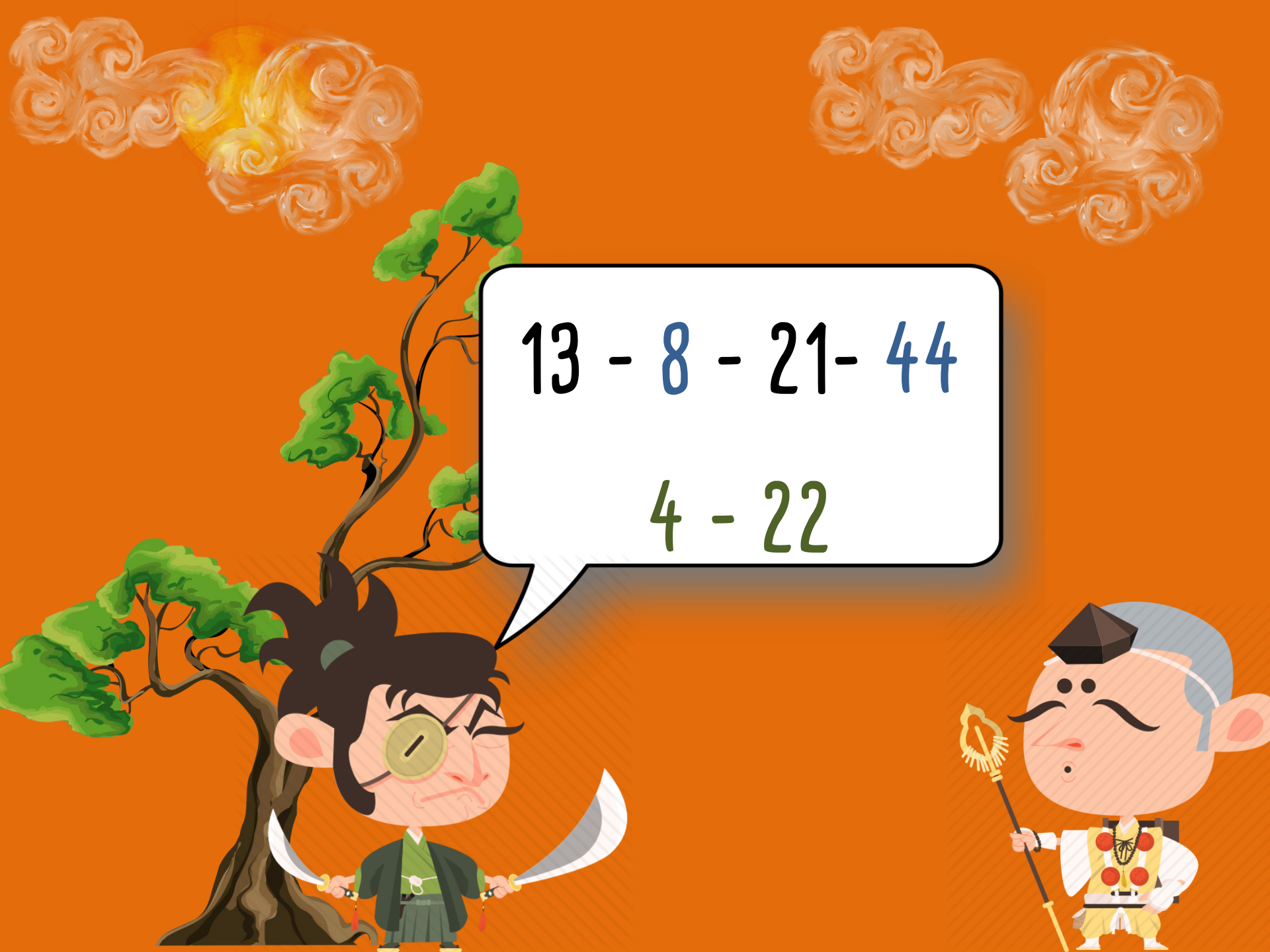
13 - 8 - 21 - 44





ÉCRIS LA MOITIÉ DES  
MULTIPLES DE 2





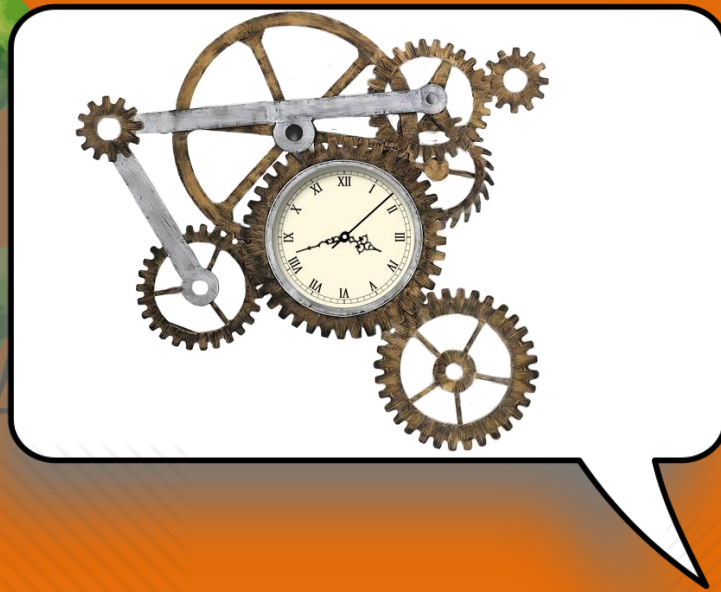
13 - 8 - 21 - 44


4 - 22



175 - 206 - 311








AJOUTE 25 DIZAINES  
AU(X) NOMBRE(S) PAIR(S)

The background is a solid orange color with stylized, swirling clouds in shades of orange and yellow at the top. On the left, a tree with a dark brown trunk and green foliage stands. A cartoon man with black hair, a monocle, and a green robe with a white sash holds two curved swords. On the right, a cartoon woman with a blue bun, a black mustache, and a yellow and white outfit holds a staff with a golden ring. A white speech bubble with a black border points from her towards the center, containing a math problem.

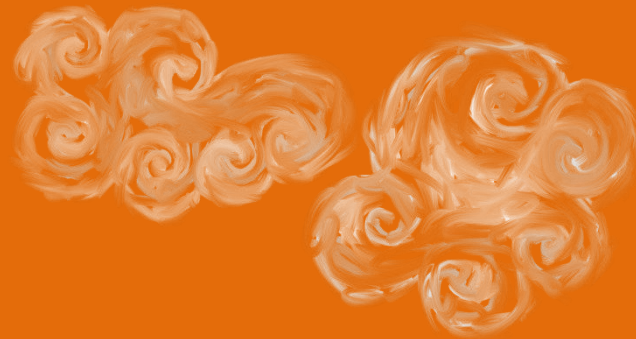
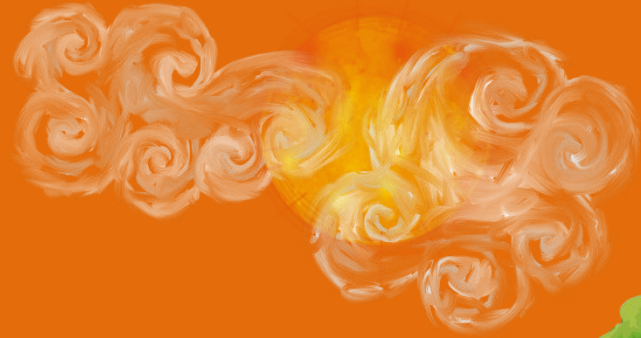
$175 - \underline{206} - 311$


456



The background is a solid orange color with stylized, swirling clouds in shades of orange and yellow at the top. On the left, a tree with a dark trunk and green foliage stands. In the center, a white speech bubble with a black border contains the text '64 - 53 - 91 - 80'. At the bottom left, a cartoon man with black hair, a green monocle, and a green robe holds two curved swords. At the bottom right, a cartoon woman with a blue headpiece, a mustache, and a yellow and white outfit holds a staff with a golden ring.

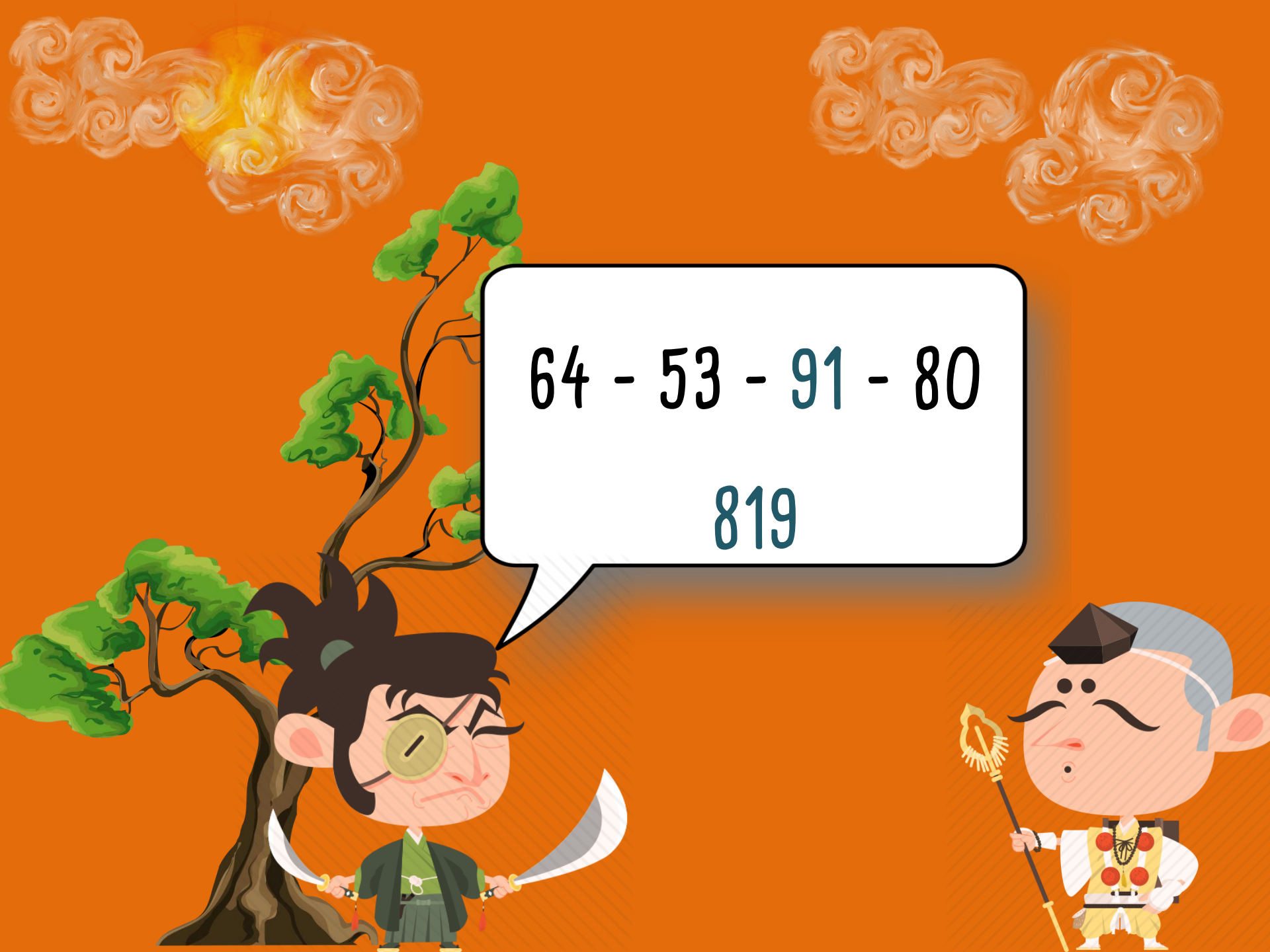
64 - 53 - 91 - 80






MULTIPLIE PAR 9 LE PLUS  
GRAND NOMBRE





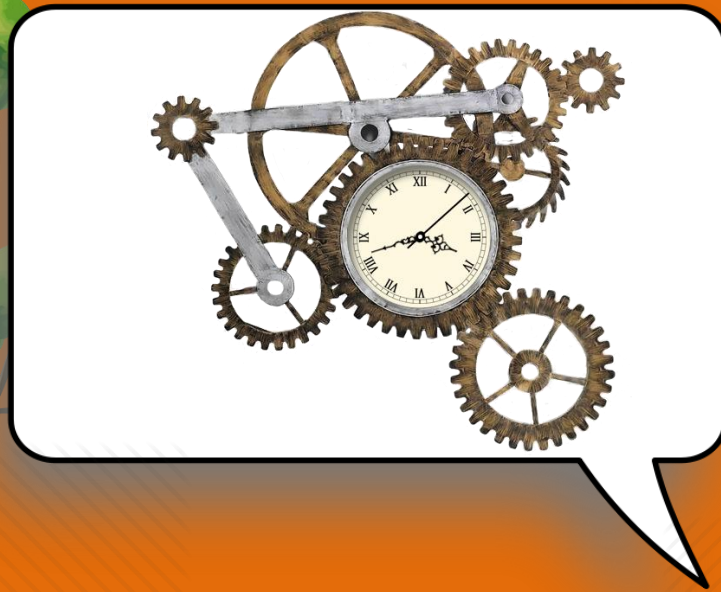
64 - 53 - 91 - 80

819



$7,5 - 8,8 - 6,9$

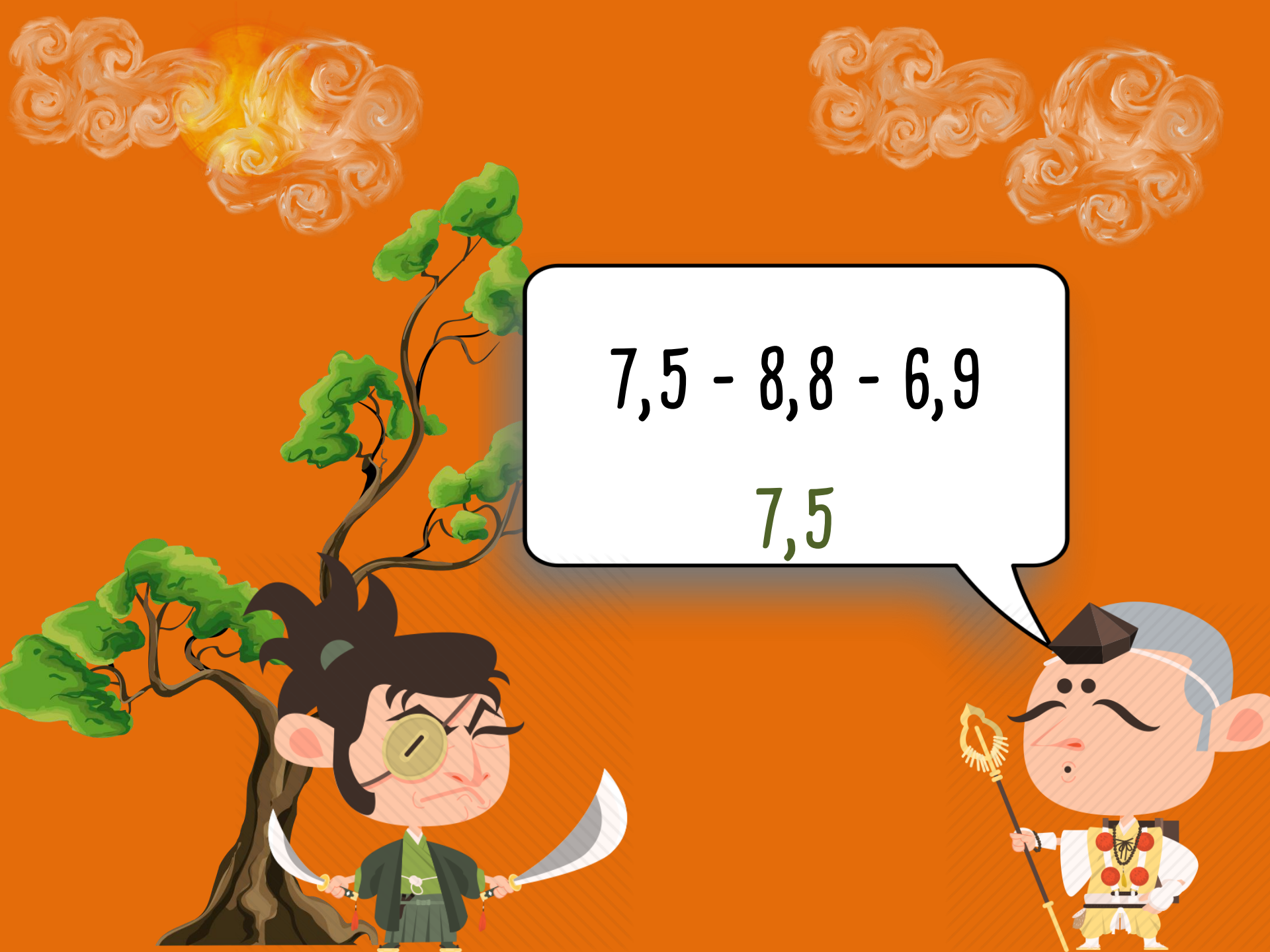







QUEL NOMBRE EST LE  
PLUS PROCHE DE 8 ?



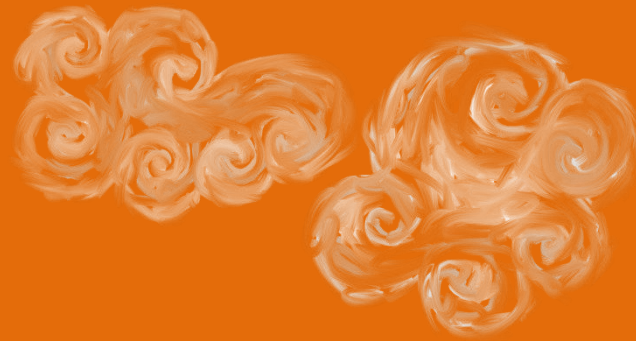
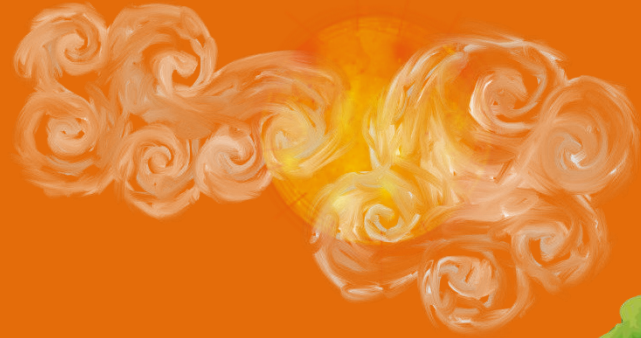

$$7,5 - 8,8 - 6,9$$

7,5




67 - 83 - 22 - 15





The background is a solid orange color. In the top left, there are stylized, swirling clouds in shades of orange and yellow. In the top right, there are more stylized, swirling clouds in shades of orange. On the left side, there is a large, gnarled tree with green foliage. In the bottom left, a cartoon man with black hair, a monocle, and a green and black outfit holds two curved swords. In the bottom right, a cartoon woman with a blue headpiece, a mustache, and a yellow and white outfit holds a staff with a golden ring. A large white speech bubble with a black border is positioned in the center, containing the text.

AJOUTE 9 À CHAQUE NOMBRE  
IMPAIR



67 - 83 - 22 - 15

76 - 92 - 24





FIN